



# JSC GEO STONE

---

COMPANY INFORMATION

Y2020



# Disclaimer

---

Introducing to the given document, you agree to be bound by the following:

Given presentation is intended only for use by the recipient and is strictly confidential to the receiver, may not be retransmitted or further distributed to the press or any other person, and may not be reproduced in any form. Failure to comply with this restriction will constitute a violation of applicable laws regarding confidentiality of the information.

Information presented in this document has been prepared solely for the use in this presentation and has not been independently verified. None of Geo stone or any of its shareholders, directors, officers, employees, affiliates, advisors and representatives accepts any liability whatsoever for any loss howsoever arising from any use of this presentation or its contents or otherwise arising in connection therewith. Hence, no representation, warranty or undertaking, express or implied, is made or given by or on behalf of the Company or any of its shareholders, directors, officers, employees, affiliates, advisors and representatives as to the accuracy, completeness or correctness of the information or the opinions contained in this document. The information in this Memorandum is subject to verification, completion and change. None of Geo stone or any of its shareholders, directors, officers, employees, affiliates, advisors and representatives assume any responsibility for failure or delay in updating or removing the information contained herein.

No part of this presentation, nor the fact of its distribution, should form the basis of, or be relied on in connection with, any contract or commitment whatsoever.

# Table of Contents

---

About Us.....	4
List of Companies and Quarries.....	5
List of Licenses -1.....	6
List of Licenses - 2.....	7
Quarries Locations.....	8
Distance to Poti Port.....	9
Supply Chain Management.....	10
Quarry Visualization.....	11
About JSC Geo Stone.....	13

# About Us

---

. JSC Geo Stones represents the group of traditional and experienced stone mining companies in Georgia for the purpose of supplying the new breakwater construction at port of Poti, within the north phase port extension project.

. Our partner companies have experience in supplying natural stone for different infrastructural projects like:

1. Tbilisi - Sarpi highway landscaping works - (Adjara)
2. Rioni riverbank strengthening works - (Kutaisi)
3. Construction of breakwaters in port of Kulevi - (Black Sea)
4. Rehabilitation works of International Batumi Airport - (Adjara)





# List of Companies and Quarries

---



- 1) **LLC Lolasheni 2009** – quarries located in Tkibuli municipalty (Kursebi, Orpiri and Koka village) , licenses nr 100746, 1001705, 10000558, 10001046, 3700TH120 = 416'205m<sup>3</sup> , estimated reserves 1'831'400 m<sup>3</sup> ,
- 2) **LLC Robert Tsirekidze** – quarry located in Tskaltubo municipality “Opurchkheti”, license nr 00929 , dated 24.07.2017 = 69'986 m<sup>3</sup> ,
- 3) **Pr.Ent. Robert Tsirekidze** – quarry located in Tskaltubo municipality “Opurchkheti”, license nr 1001266 , dated 26.07.2017 = 84'000 m<sup>3</sup> ,
- 4) **Pr.Ent. Gocha Dogonadze** - quarry located in Tskaltubo municipality , Okhomira village , licence 10007806 /dtd 24.08.2012 = 74'000 m<sup>3</sup> ,
- 5) **Pr.Ent. Ramin Esartia** - village Okhomira, Tkibuli municipality, license nr 10000616 /dtd 20.03.2019 and 10001027/dtd 15.10.2019 = 156'510m<sup>3</sup>
- 6) **LLC Teshenit 2018** - village Zhoneti, Tskhaltubo municipality, license nr 10000393, dated 5.12.2018 = 45650 m<sup>3</sup>
- 7) **Pr.Ent. Konstantine Mamrikishvili** - village Zarati, Tskhaltubo municipalty, license nr 1001704, dated 19.09.19 = 48000 m<sup>3</sup>

# List of Licenses -1

Nº of register	License number	Quarry name and location	Material description	Region	License holder	date of issue and license validity	License scope m3	Estimated reserves m3	Quarry area m2
952	10000616	"Okhomira", village Okhomira, Tkibuli municipality	teshenit	Tkibuli	Pr.Ent. Ramin Esartia	20.03.19 21.03.29	99600.00		19920.00
2924	1001266	"Opurchkheti", village Opurchkheti, Tskhaltubo municipality	teshenit	Tskhaltubo	Pr.Ent.Robert Tsirekidze	26.07.17 02.08.22	84000.00		
	1001704	"Zarati", village Zarati, Tskhaltubo municipality	teshenit	Tskhaltubo	Pr.Ent.Konstantine Mamrikishvili	19.04.19 01.08.24	48000.00		
1329	10001027	"Okhomira", village Okhomira, Tkibuli municipality	teshenit	Tkibuli	Ph.Body Ramin Esartia	15.10.19 16.10.24	56910.00		8130.00
400	100746	"Kursebi", village Koka, Tkibuli municipality	teshenit	Tkibuli	LLC Lolasheni 2009	25.12.09 20 Years	83000.00	1 831 400	8300.00
379	1001705	"Okhomira", village Okhomira, Tkibuli municipality	teshenit	Tkibuli	LLC Lolasheni 2009	31.07.14 01.08.34	49700.00		35.50
898	10000558	"Kursebi", village Okhomira, Nkibuli municipality	teshenit	Tkibuli	LLC Lolasheni 2009	19.02.19 20.02.34	128900.00		12890

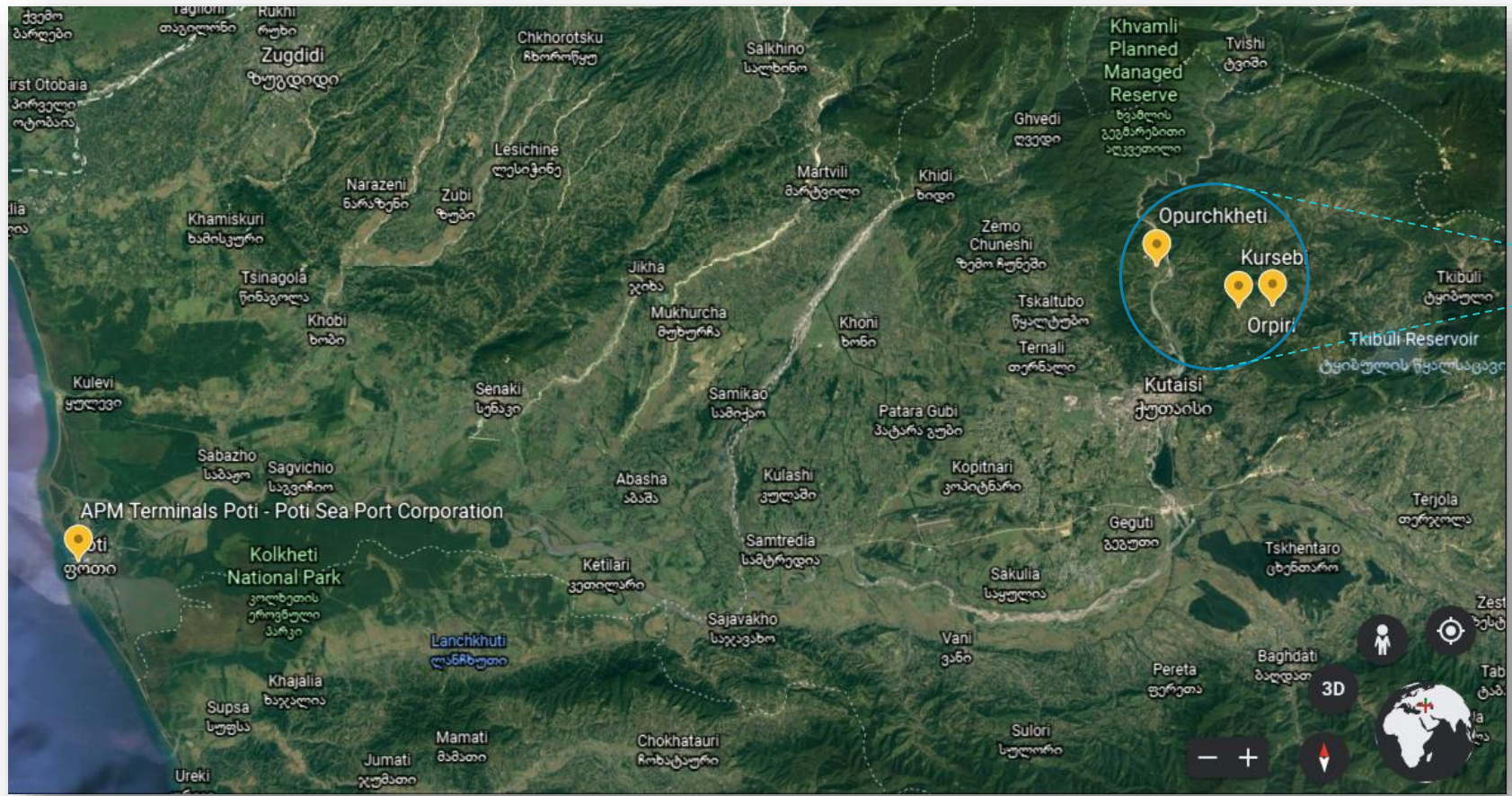
# List of Licenses - 2

Nº of register	License number	Quarry name and location	Material description	Region	License holder	date of issue and license validity	License scope m3	Estimated reserves m3	Quarry area m2
1347	10001046	"Koka", village Koka, Tkibuli municipality	teshenit	Tkibuli	LLC Lolasheni 2009	21.10.19 22.10.24	35500.00		7100.00
	370OTH120	"Kursebi", village Koka, Tkibuli municipalty	teshenit	Tkibuli	LLC Lolasheni 2009	17.11.20 18.11.35	119105.00		
2919	00929	"Opurchkheti", village Opurchkheti, Tskhaltubo municipalty	teshenit	Tskhaltubo	LLC Robert Tsirekidze		69986.00		
748	10000393	"Zhoneti", village Zhoneti, Tskhaltubo municipality	teshenit	Tskhaltubo	LLC Teshenit 2018	05.12.18 06.12.23	45650.00		9130.00
541	1000806	"Okhomira", village Okhomira, Tkibuli municipality	teshenit	Tkibuli	Pr.Ent.Gocha Dogonadze	24.08.12 25.08.32	74000.00		0.74
		<b>Total:</b>					<b>894351.00</b>		

**TOTAL - 621 170 cubic meters**



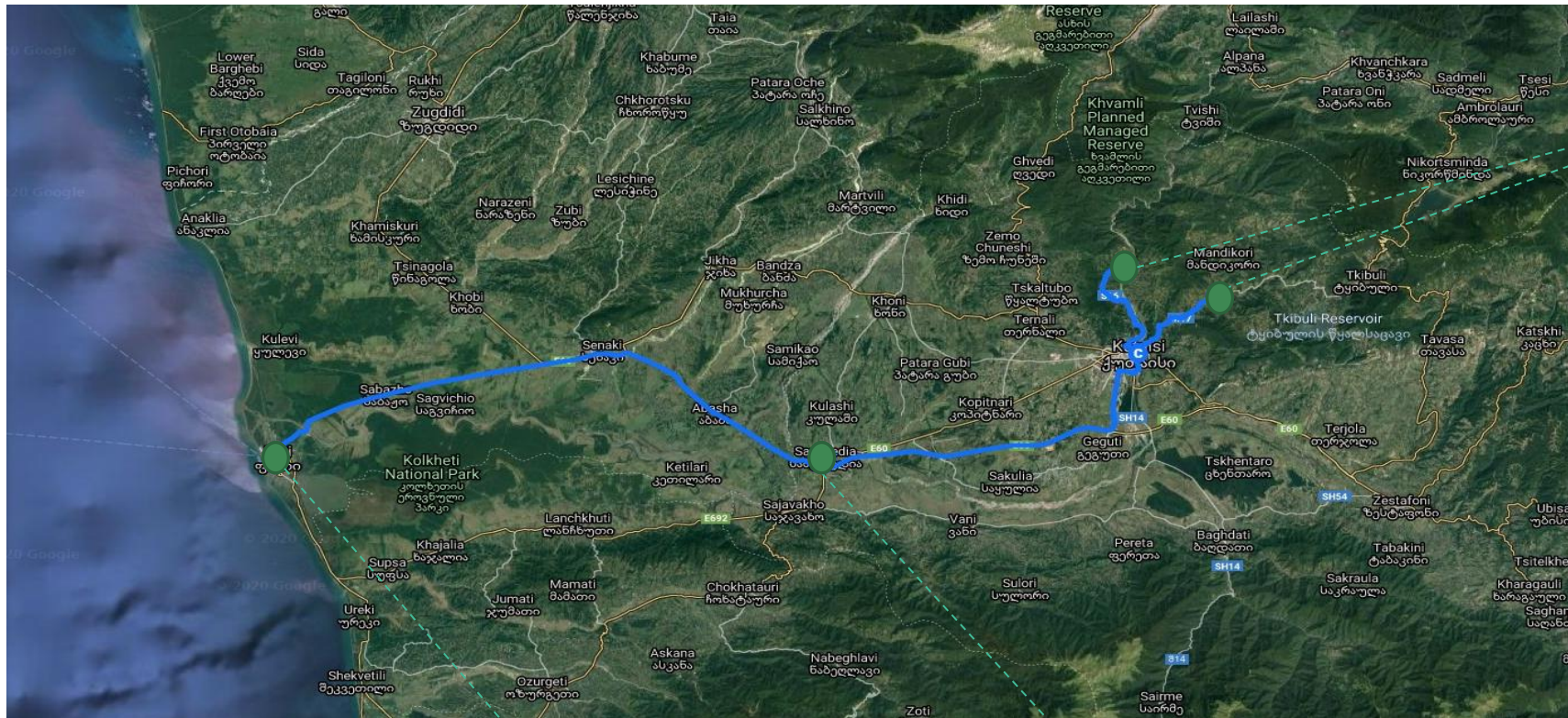
# Quarries Locations



Geo Stone's main quarry location in Imereti region



# Quarries Locations



Quarry Main Location



- Okhomira - Orpiri 3KM
- Orpiri - Kutaisi 14 KM
- Kutaisi - Samtredia Workshop 32 KM
- Samtredia Workshop - Poti Port 72 Km

• **Total 121 KM**

- Opurchkheti - Kutaisi 15 KM
- Kutaisi - Samtredia Workshop 32 KM
- Samtredia Workshop - Poti Port 72 Km

• **Total 119 KM**

APMT Poti PORT



Calibration Workshop and stock accumulation facility Samtredia





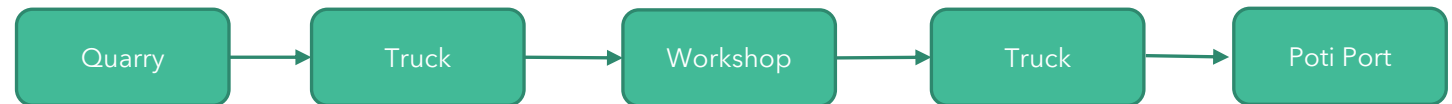
# Supply Chain Management



Material will be stored initially and calibrated on calibration workshop in Samtredia, which is on 50km far from quarries.

Then calibrated material will be supplied to the Poti site. Distance from Samtredia to Poti site is 70km.

Transport mode from Samtredia workshop to Poti site : U-section body four axes dumper trucks - 32 Tones per load





# Quarry Visualization

---

LLC Lolasheni 2009 quarry pictures



LLC Robert Tsirikidze





# Quarry Visualization

Pr.Ent. Robert Tsirekidze -quarry pictures



Pr.entn Konstantine mamrikishvili







**CEO**

We are the leading stone mining regional company that creates the time and cost value for local businesses

# About JSC Geo Stone

---

JSC Geo stone was established by several operators of stone quarries.

located in the territory of Tskaltubo municipality and Tkibuli district.

Date of registration 1 September 2020.

General director - Ladislav Halacka, /Czech Republic/

Executive Director - Sandro Chakhnashvili

Actual Address: 8 Soliko Virsaladze str., 0108 Tbilisi, Georgia

---

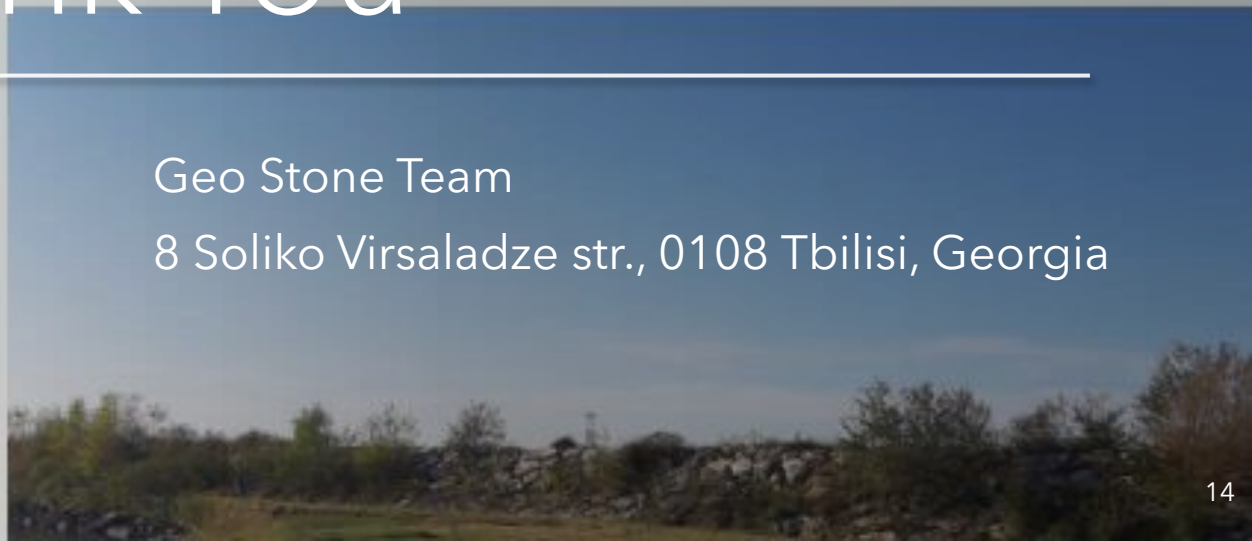
Email: [ladislav-halacka@geostone.com.ge](mailto:ladislav-halacka@geostone.com.ge); [sandro.chakhnashvili@geostone.com.ge](mailto:sandro.chakhnashvili@geostone.com.ge);  
[mamuka.kakushadze@geostone.com.ge](mailto:mamuka.kakushadze@geostone.com.ge); [info@geostone.com.ge](mailto:info@geostone.com.ge)

Tel.: +995599393729 ; +995595233799



# Thank You

---



Geo Stone Team  
8 Soliko Virsaladze str., 0108 Tbilisi, Georgia